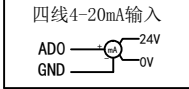
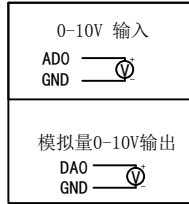
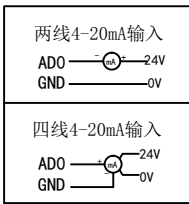
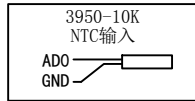
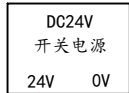


# FX3U-88MT 接线图



注: 模拟量选配  
0-10V  
4-20mA  
3950-10K NTC



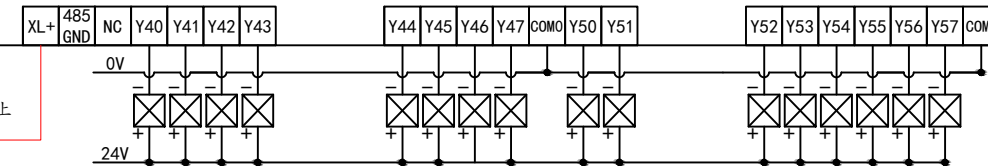
模拟量输入 模拟量输出  
0-10V



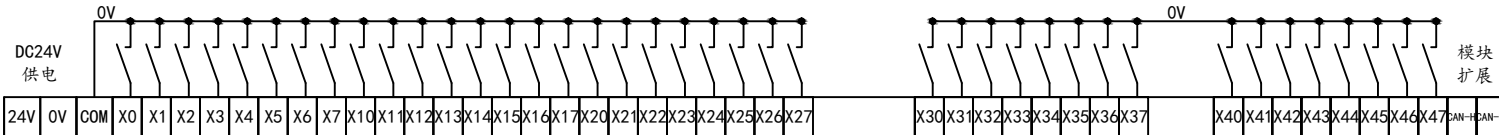
## 上层端子

Y40-Y57晶体管输出COM0, COM1端子必须接0V

本端子必须单独直接  
连接到开关电源的24V上



输入COM端子必须接0V



传感器型号:NPN

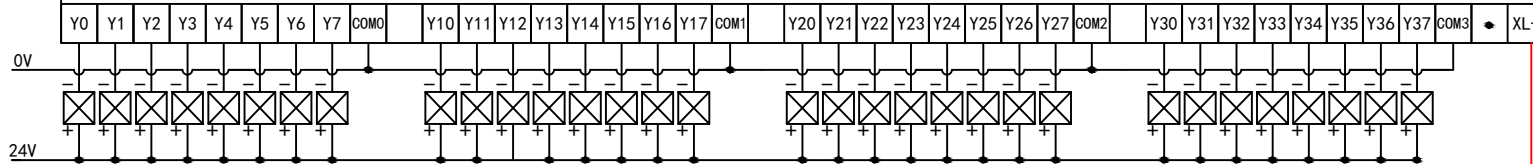
传感器型号:NPN

传感器型号:NPN



## FX3U-88MT

Y0-Y37晶体管输出COM0, COM1, COM2, COM3端子必须接0V



本端子必须单独直接  
连接到开关电源的24V上

XL+端子为保护内部晶体管板而设计, 可极大提高产品可靠性及寿命, 强烈推荐连接